

*Dermacentor* sp.; adult male with dorsal surface covered by hard “ornate” scutum. Example of “ornate”, or “scutate”, tick. Scutum of female covers only approximately anterior third of dorsal surface. Note also, festoons along posterior body margin.

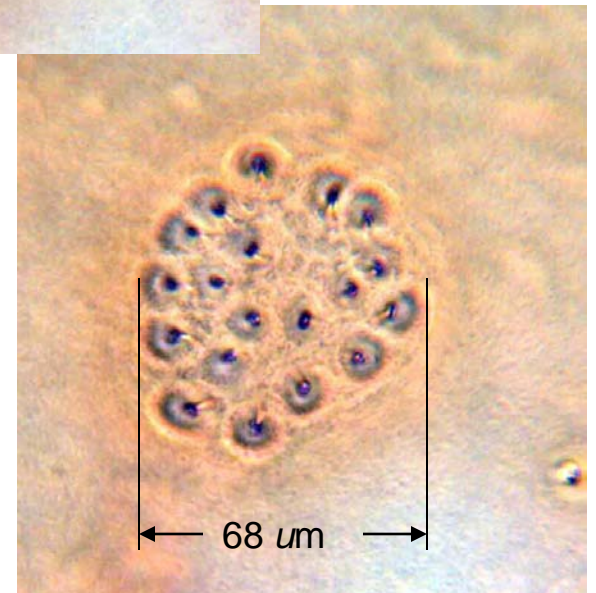
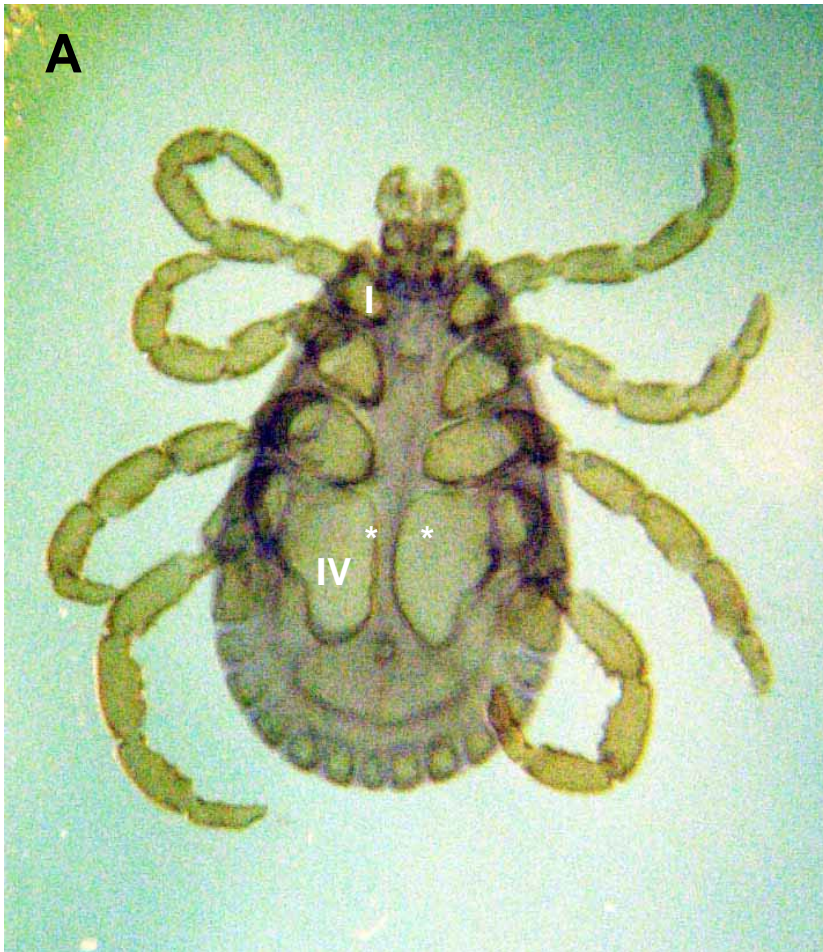
*Dermacentor* sp.: female (A); engorged female (B) dorsal views.  
Legend: a, abdomen; f, festoons; s, scutum.



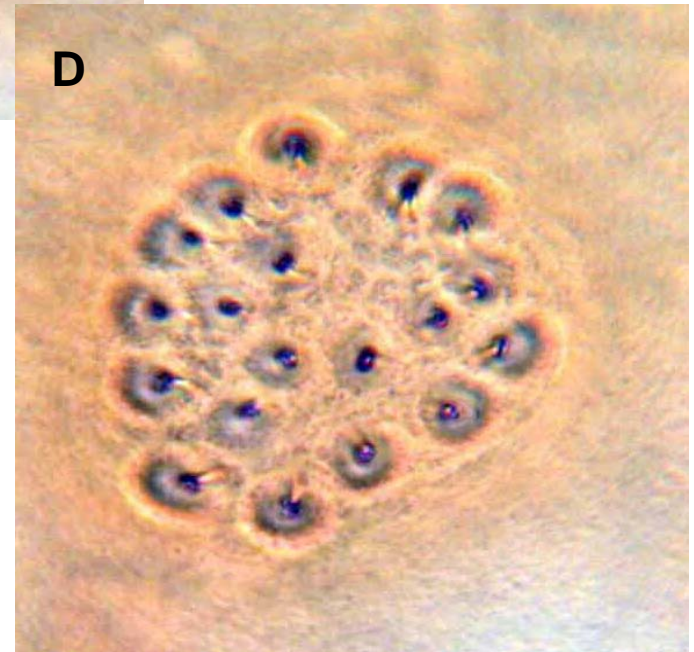
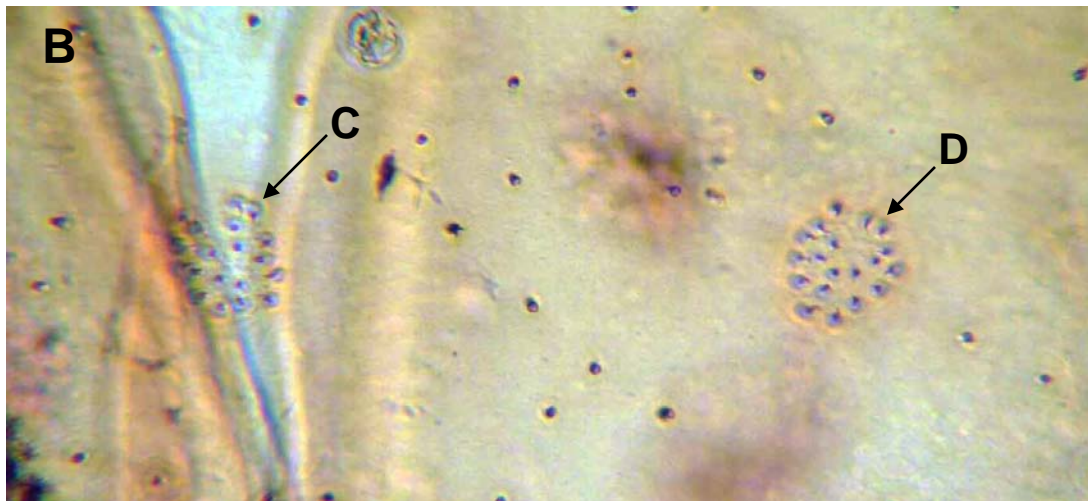
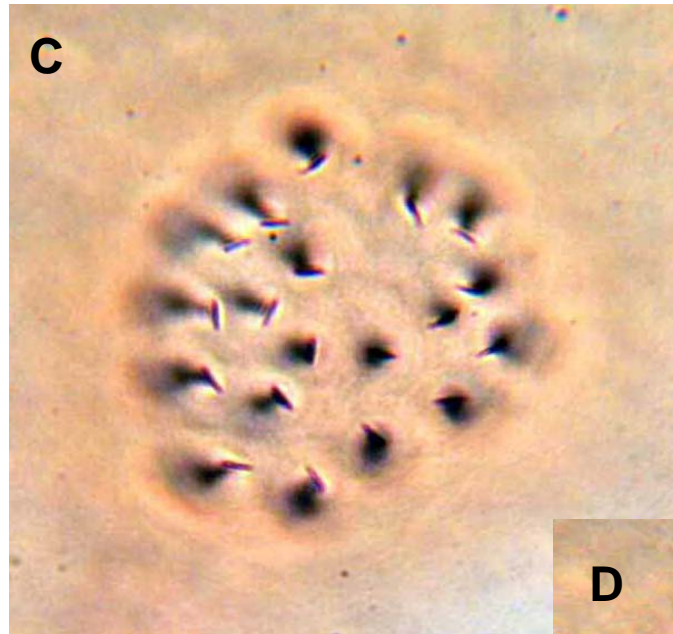
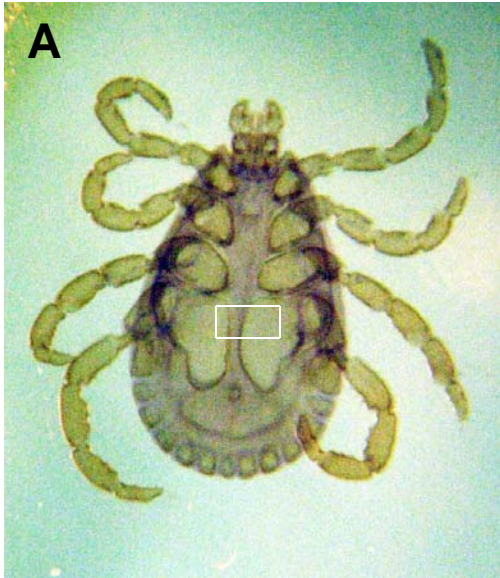
*Dermacentor* sp.: female (A); engorged female (B) ventral views.



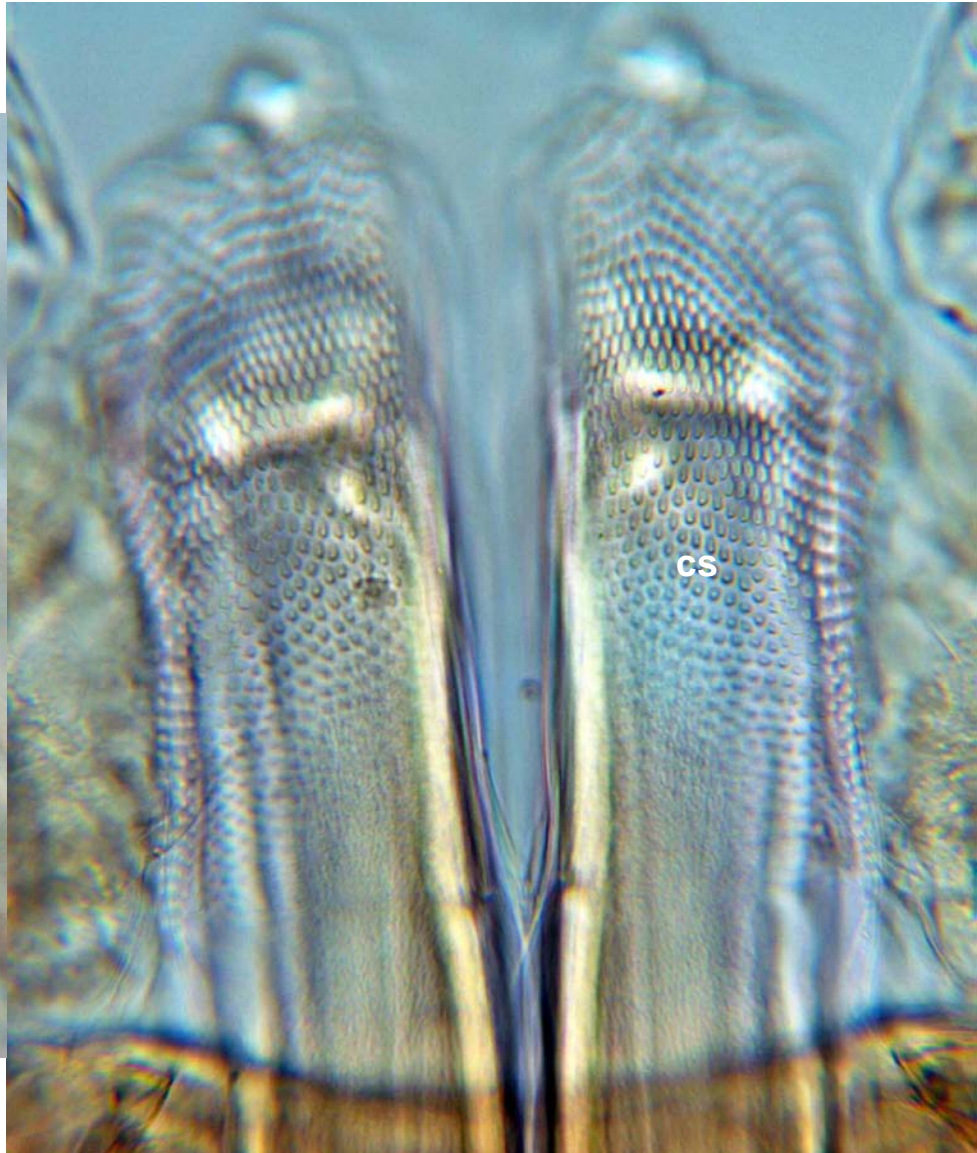
Dorsal sensory structures on this adult *Dermacentor* (approximate location shown by asterisks in A). Note too, festoons along posterior body margin and the increase in coxa size from Coxa I (I) to Coxa IV (IV).



Dorsal sensory structures on this adult *Dermacentor*. Box in A, enlarged in B. Sensory structures in B, enlarged in C and D.



*Dermacentor* sp.: distal chelicerae (C), and dentate chelicerae sheaths (cs). Hypostome not in field of focus.



*Dermacentor* sp.; hexapod larva.

